

DIVISÓRIAS ACÚSTICAS MÓVEIS

Movable walls for greater scope

 **Lismarca**

sistemas de sombreamento | mobiliário para hotelaria
sociedade de representações, lda.



Mudando Espaços |

Changing Spaces | Creating Choice



Contents



sistemas de sombreamento | mobiliário para hotelaria
sociedade de representações, lda.

Image

Everything stays different	4
The art of transformation	5
Outstanding craftsmanship and partition solutions	6
A spatial experience – An experiential space	8
The joy of inspiration	10
As creative as you are	12
Innovation and dependability	14

Technology

Components in a movable wall	16
100 M plain panel – Details	18
End face views	19
Telescopic panels	20
Door panel details	22
Recessed door handles	23
Glazed sections	24
100 G glass panel	26
Transparency and sound insulation combined	27
Special panels	28
Wall abutments	29
Aluminium tracks	30
Parking configurations	32
Certificates	36
Our range	37
Portefolio	38

Everything stays different

People are explorers. They love change. It is the foreign, the unexplored, that is appealing and brings us forward. And what is new always influences the experience we have. When we enter a room, for example.

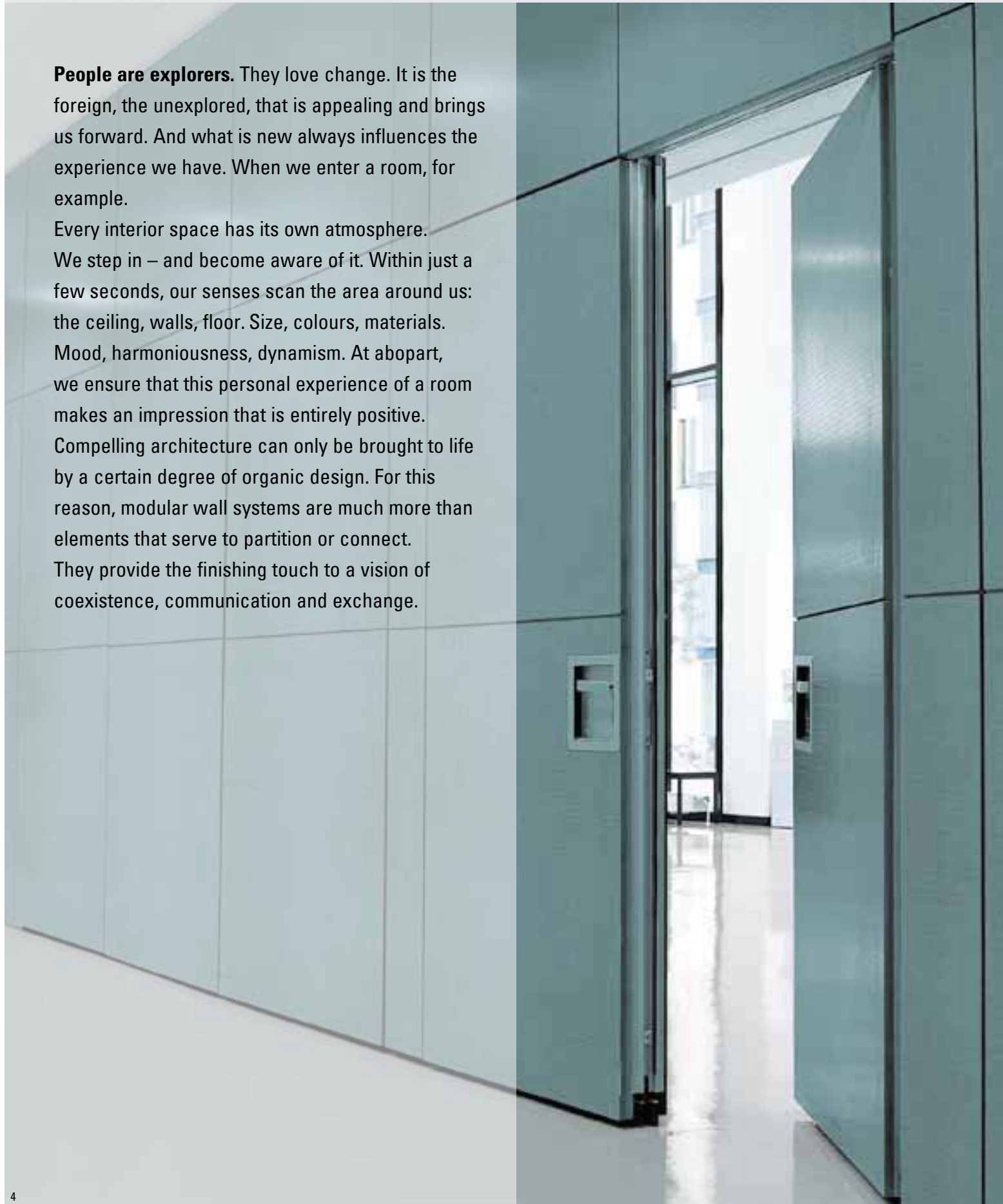
Every interior space has its own atmosphere.

We step in – and become aware of it. Within just a few seconds, our senses scan the area around us: the ceiling, walls, floor. Size, colours, materials.

Mood, harmoniousness, dynamism. At abopart, we ensure that this personal experience of a room makes an impression that is entirely positive.

Compelling architecture can only be brought to life by a certain degree of organic design. For this reason, modular wall systems are much more than elements that serve to partition or connect.

They provide the finishing touch to a vision of coexistence, communication and exchange.



The art of transformation



■ **Flexibility is a big word.** If there are any genuine experts in this field, then they are children. From a very young age, children strive to change, modulate, vary. Fortunately, at abopart, we have retained these characteristics. After all, it's not by chance that our movable walls are as well known as they are popular around the world.

Whether hotels, auditoriums, museums, exhibition centres or multi-purpose halls – all venues gain in potential as soon as their floor plan can be flexibly adapted to a variety of uses. And what holds true for buildings also applies in no less measure to mobile structures such as state-of-the-art cruise ships.

Outstanding craftsmanship and partition solutions



■ **Craftsmanship is always tailor-made.** This attribute is a prerequisite for the production of high-quality movable walls. Indeed, we only make custom products. Each order imposes a different set of specific requirements. But because we learnt our trade from scratch, we know that there is an ideal solution for every situation.

Over the years, we have applied our expertise and time-honoured construction methods to perfecting our movable walls. The result is that we can now say: everything is possible. Merely combining element types, materials, finishes and colours opens up a whole world of opportunity.



■ **The quality of our products becomes apparent during use.** And that's just one reason why we are proud of our client list (to find out more, visit www.lismarca.pt). This quality is the product of our outstanding craftsmanship. And the fact that we not only manufacture and supply, but also install. And so the circle is almost complete. Closing the gap are numerous certificates testifying to the most rigorous safety standards, such as the U.S. Coastguard Certificate of Inspection.

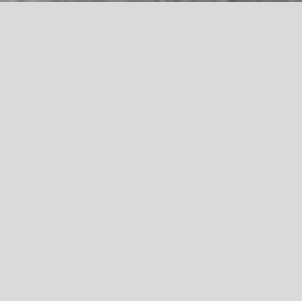
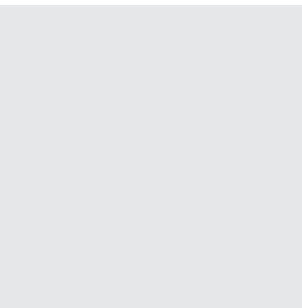
A spatial experience – An experiential space



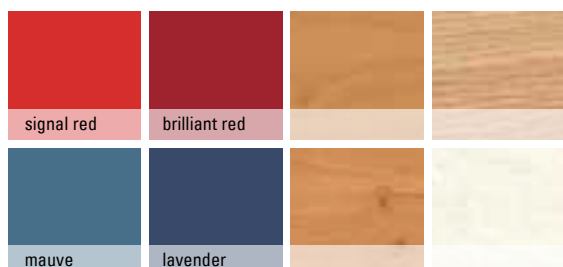
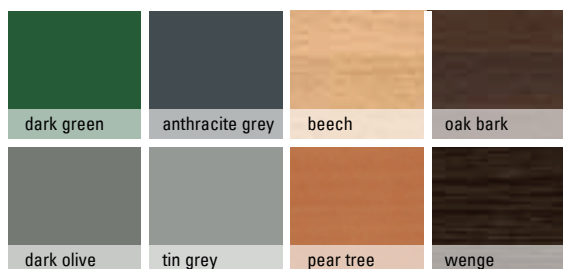
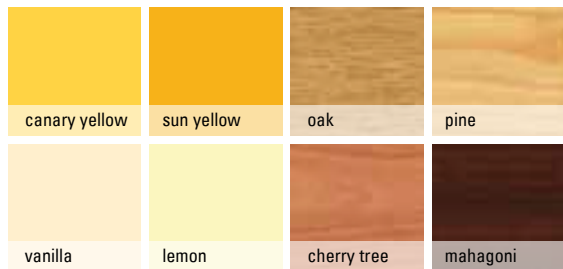
■ **They are room height, movable and sound absorbing.** Movable walls from **Lismarca** ensure that indoor spaces are put to optimal use. What is a ballroom one day can be effortlessly transformed into a conference suite, training venue and party location at any time. And so one becomes three. The best means for satisfying customer demands of every kind.

Rediscover your own interior spaces. A game in which there are only winners.

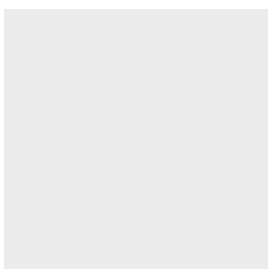
And what about wall design? The same applies here: everything is possible. The next double-page spread will give you just a small taste of the diversity of our products.



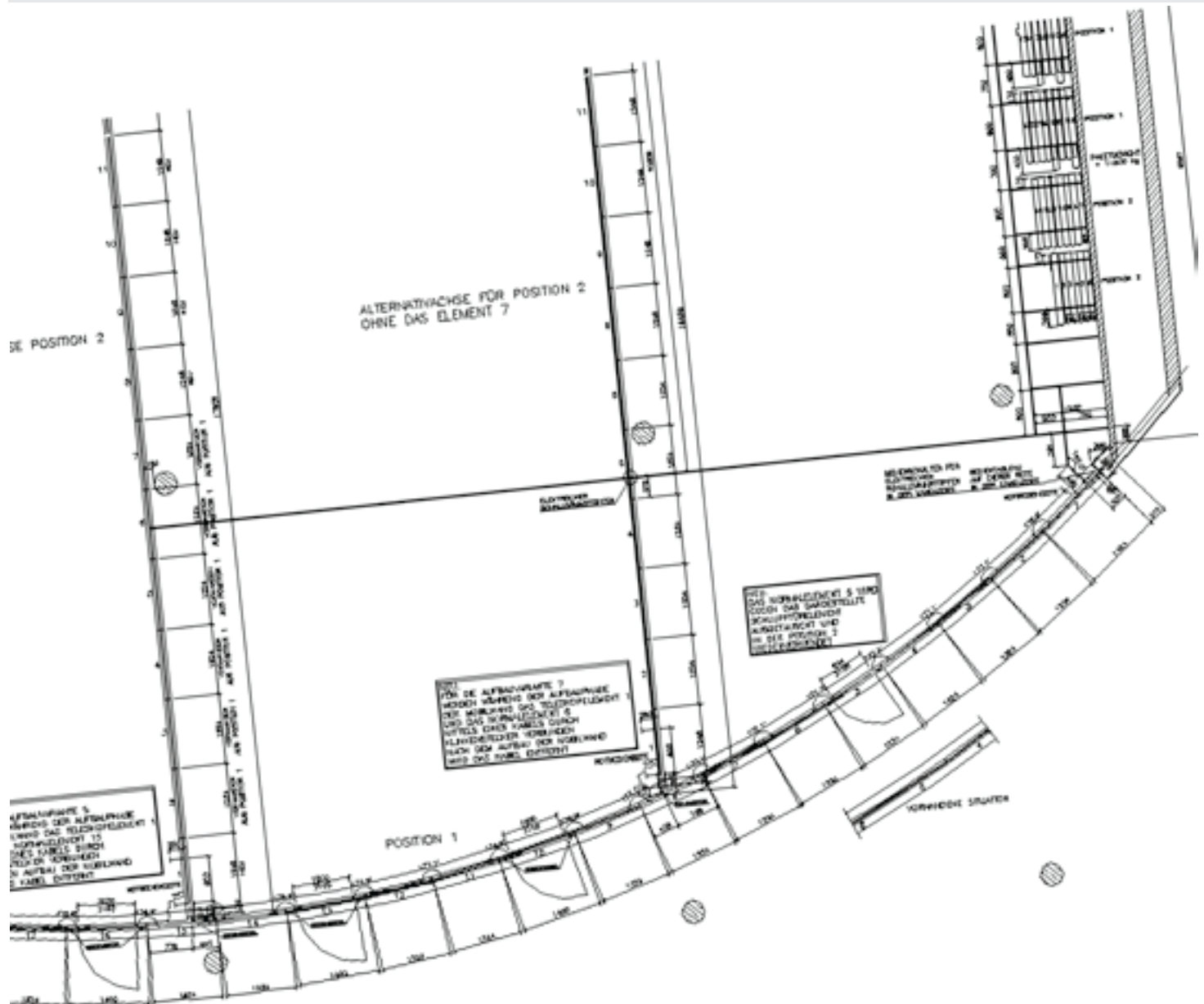
The joy of inspiration



■ **How should it look?** You might prefer a specific colour, for example. Or you could choose between warm wood hues, or textured, smooth, slotted or perforated finishes. Or a combination of these. What about sheet steel? Or maybe you prefer harmonious tone on tone? Rich colour contrasts are another option. The wall as an image, as a see-through, framed or frameless glass panel. Mirrored or fabric-covered... To put it another way, you have as many choices as we have customers. Be inspired.



As creative as you are



■ **Let's get one thing clear in advance:** abopart movable walls are as adaptable as you are. These elements can accommodate any ceiling angle and any floor plan, whether right-angled or circular. Or even both together. That's what makes them a dream solution for creative planners and architects.

Alongside various basic configurations, we also manufacture project-specific sizes with an adaptable grid. For entrances there is a choice of single- or double-leaf double-action doors or swing doors.

These structural options afford unlimited scope for your creative ideas.

■ **Lismarca movable walls comprising fully panelled or glazed elements are not only movable** they are absolutely smooth-running. Ceiling fixing in aluminium or steel track rails, plus maintenance-free carriers fitted on ball bearings, ensure that the individual elements can be effortlessly manoeuvred into their parking position. Regardless of whether the system is operated manually, semi-automatically or fully automatically.



■ **About parking:** to close the movable wall, the individual elements, which can be moved independently of one another, are stored in their end position in a user-defined “parking bay”. An inconspicuous and space-saving solution. If the building architecture includes a designated stacking area, the elements can even be made to disappear totally from sight.

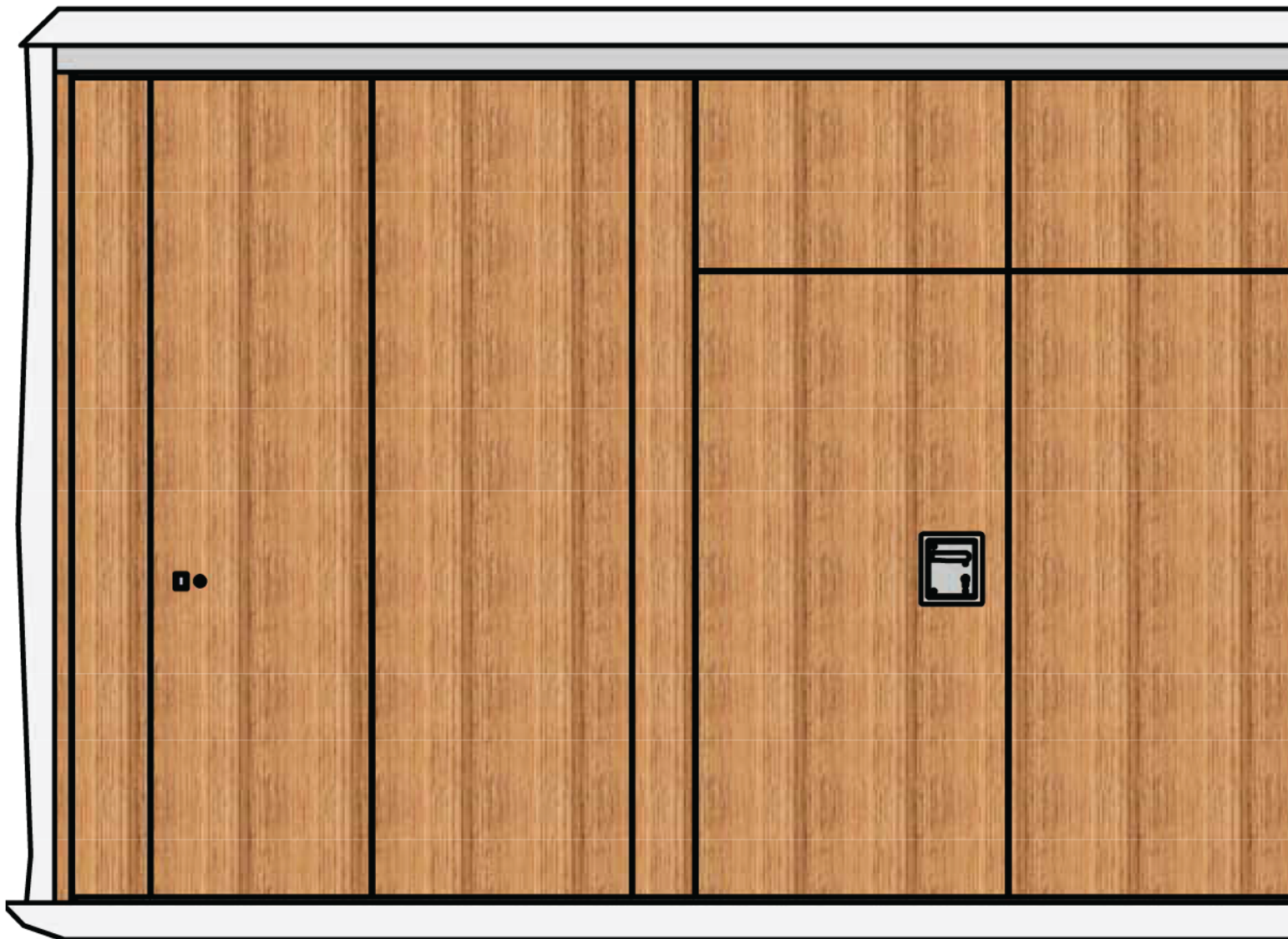
Innovation and dependability



■ **We are service providers** – so that you can manoeuvre your Lismarca movable walls back and forth and to and fro at any time. To benefit your customers and guests, to enhance their well-being and, sometimes, to their sheer amazement.



Components in a movable wall



1

2

3

4

5

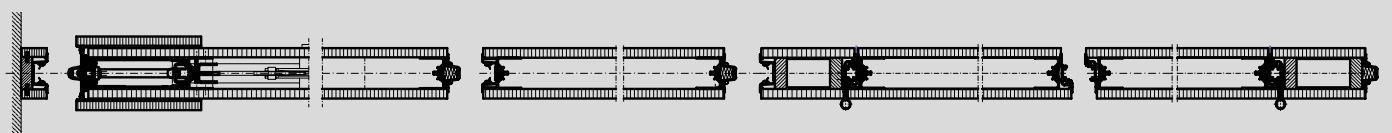
1

2

3

4

5



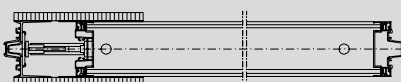
Wall
abutment

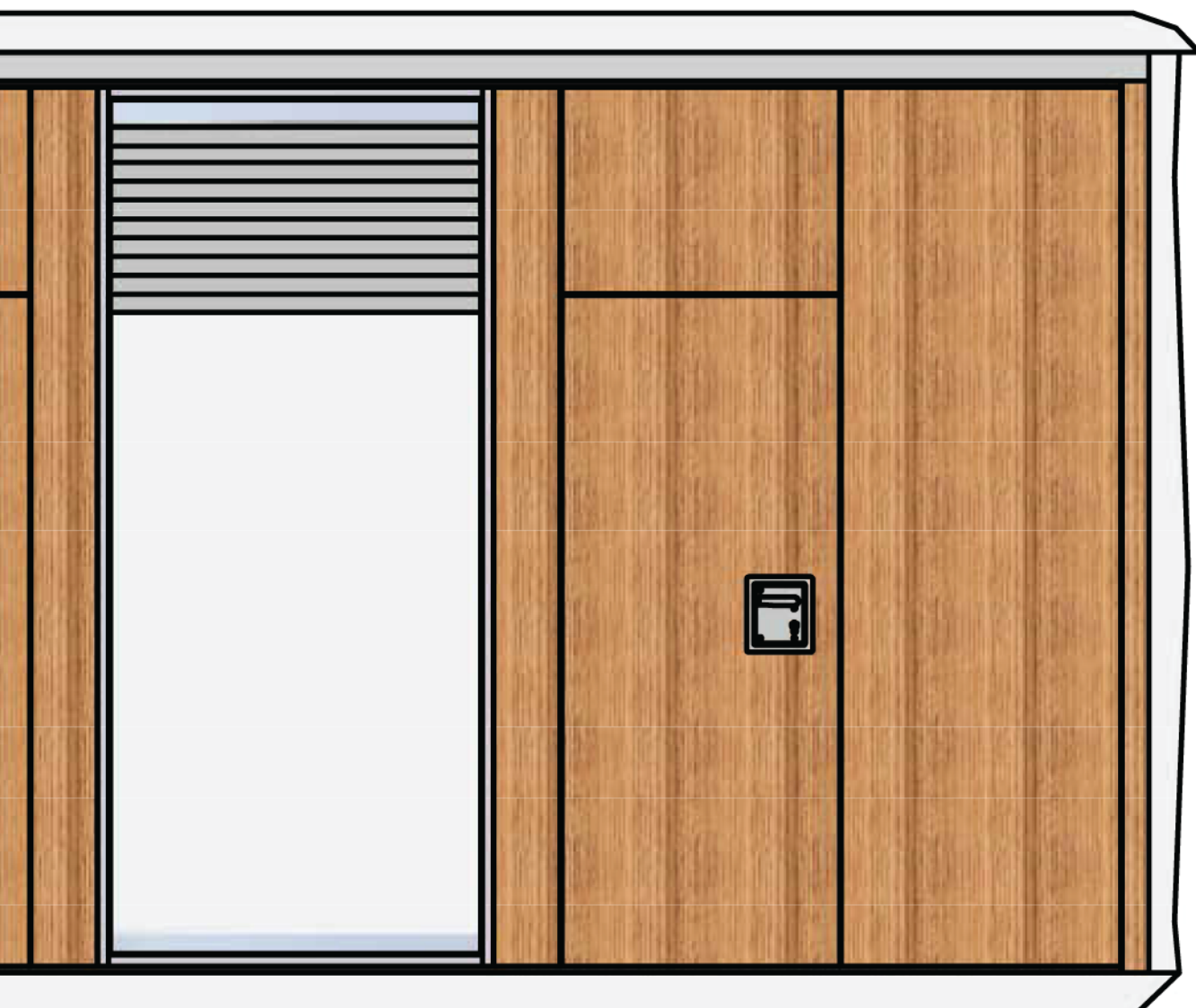
Telescopic panel

Plain panel

Double-leaf pass door

Alternative:
Telescopic glass panel





6

7

8

9

6

7

8

9



Glass panel



Pass door panel

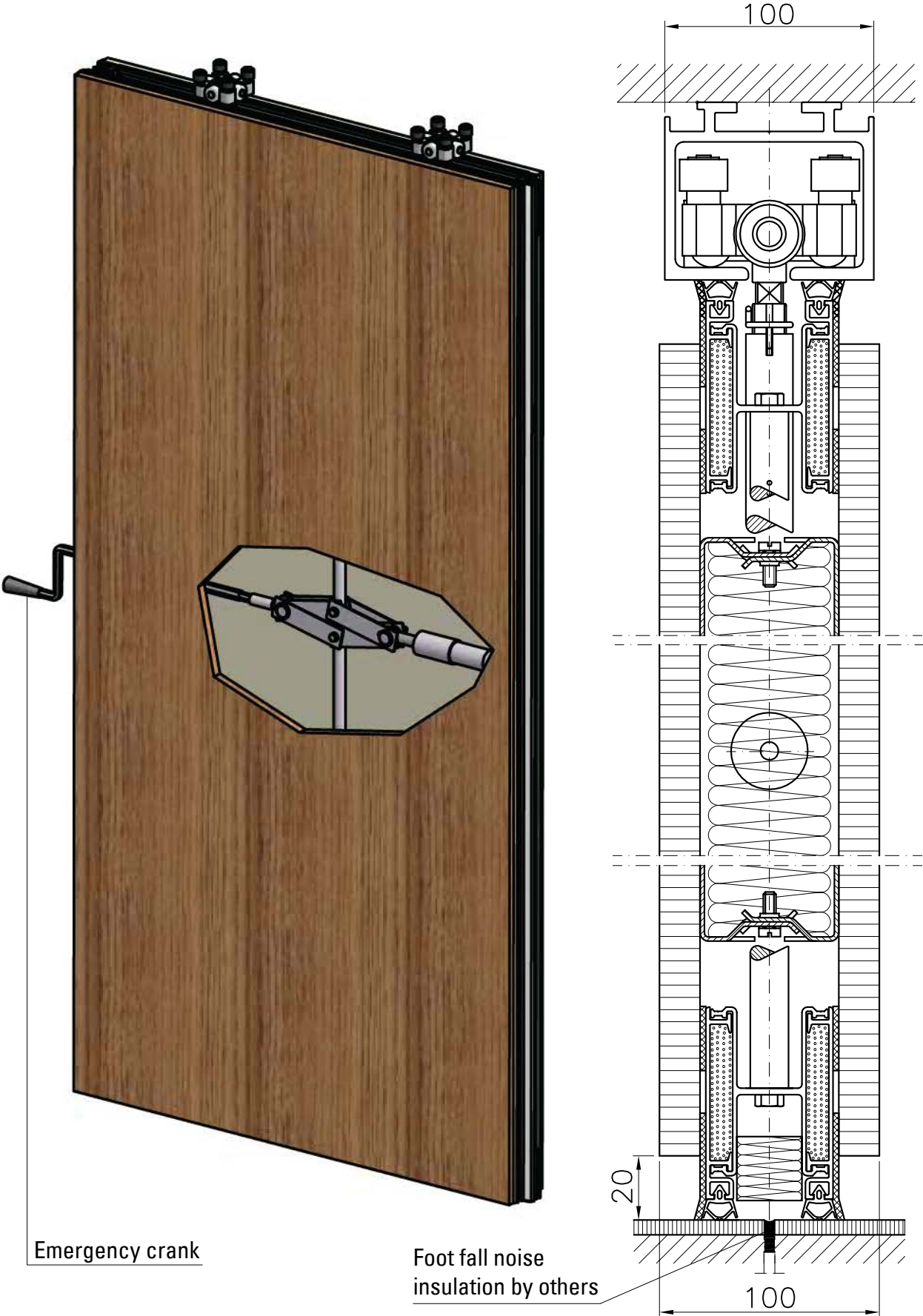


Door abutment
panel



Wall
abutment

100 M plain panel – Details



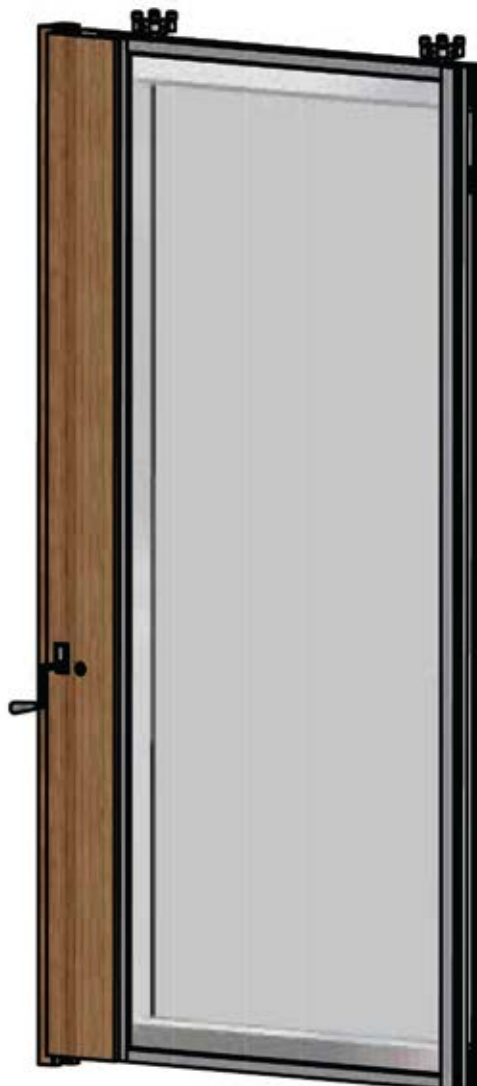
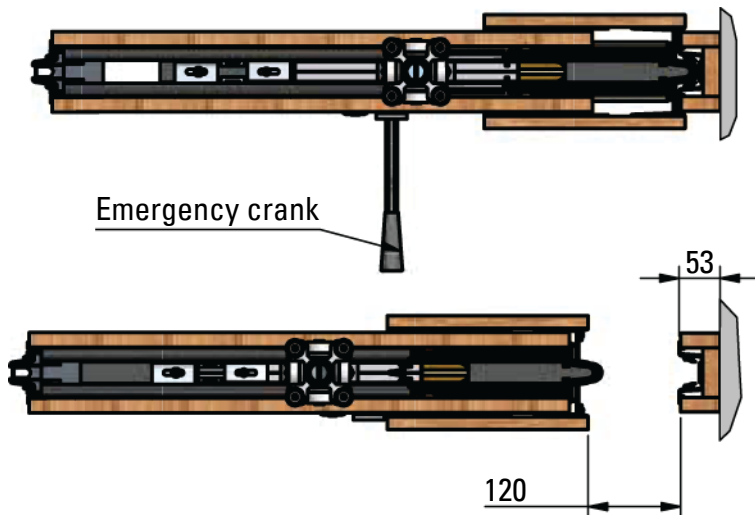
End face views



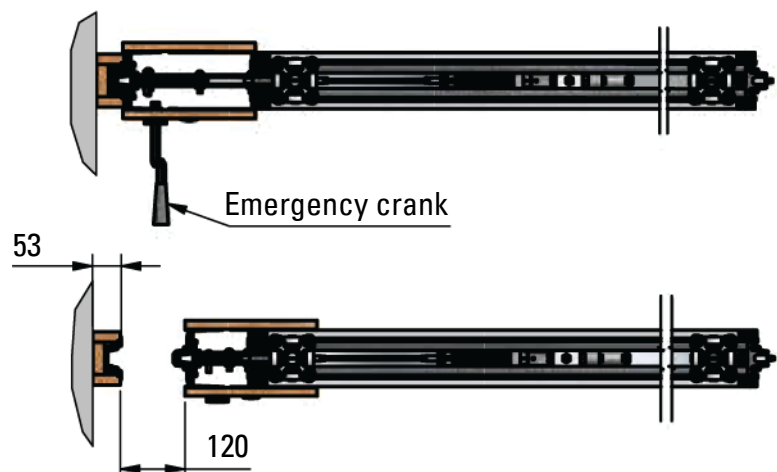
- 1** Concave end of a plain panel with floor bolt
- 2** Concave end of a plain panel with carrier engaged in track

Telescopic panels

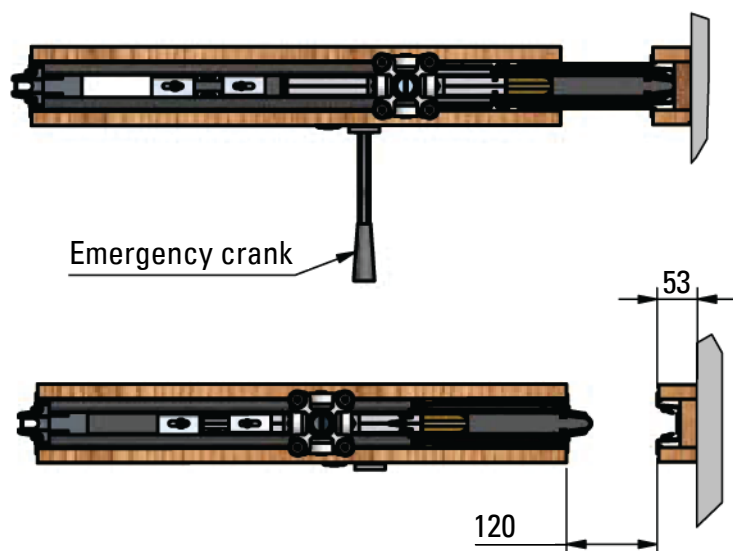
■ 100 M telescopic panel



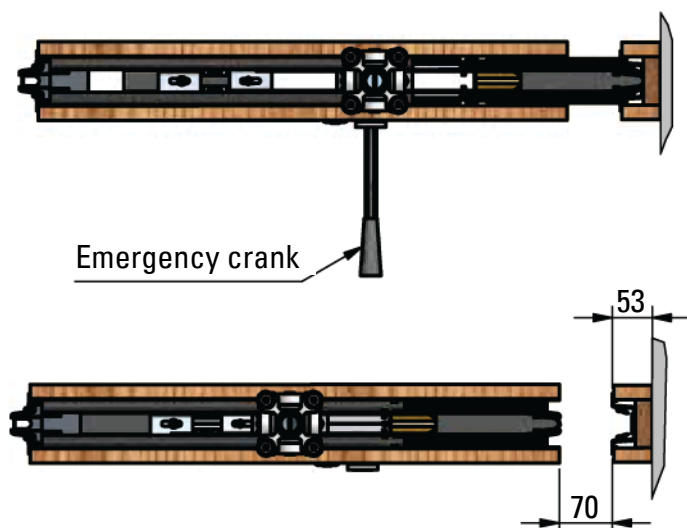
■ 100 G telescopic glass panel



■ Telescopic panel with inboard thrust unit



■ Telescopic panel with flush-type thrust unit

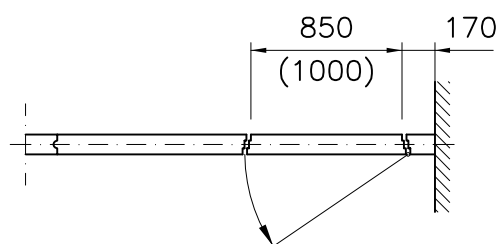


■ Telescopic panel complete with wall abutment

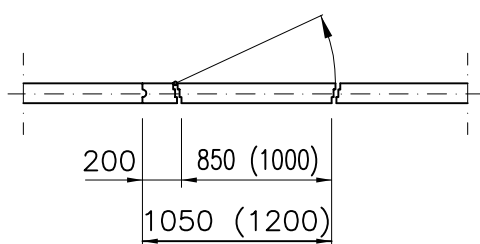
Door panel details

■ Floor plan details

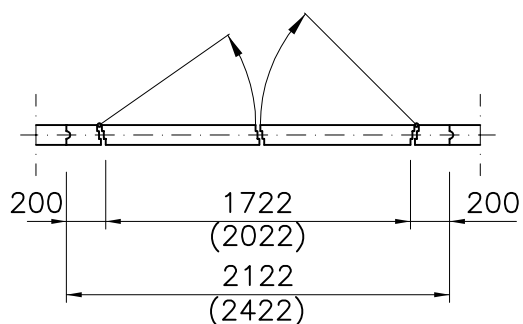
1. Full height door panel



2. Pass door panel, single-leaf

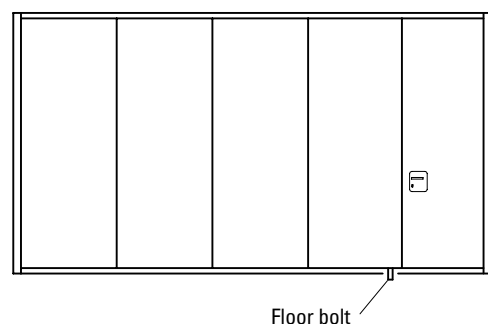


3. Pass door panel, double-leaf

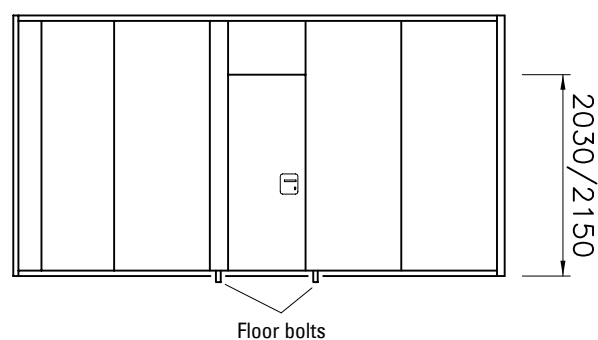


■ Views

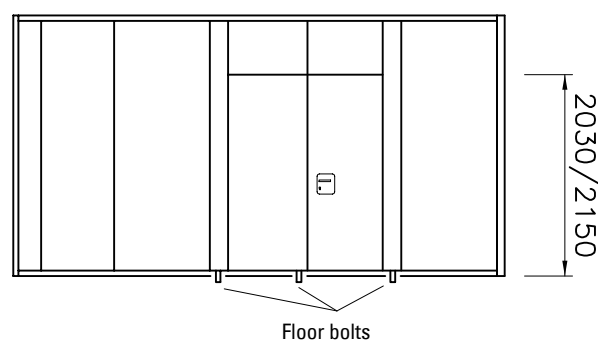
1. Full height door panel



2. Pass door panel, single-leaf



3. Pass door panel, double-leaf



■ Remarks:

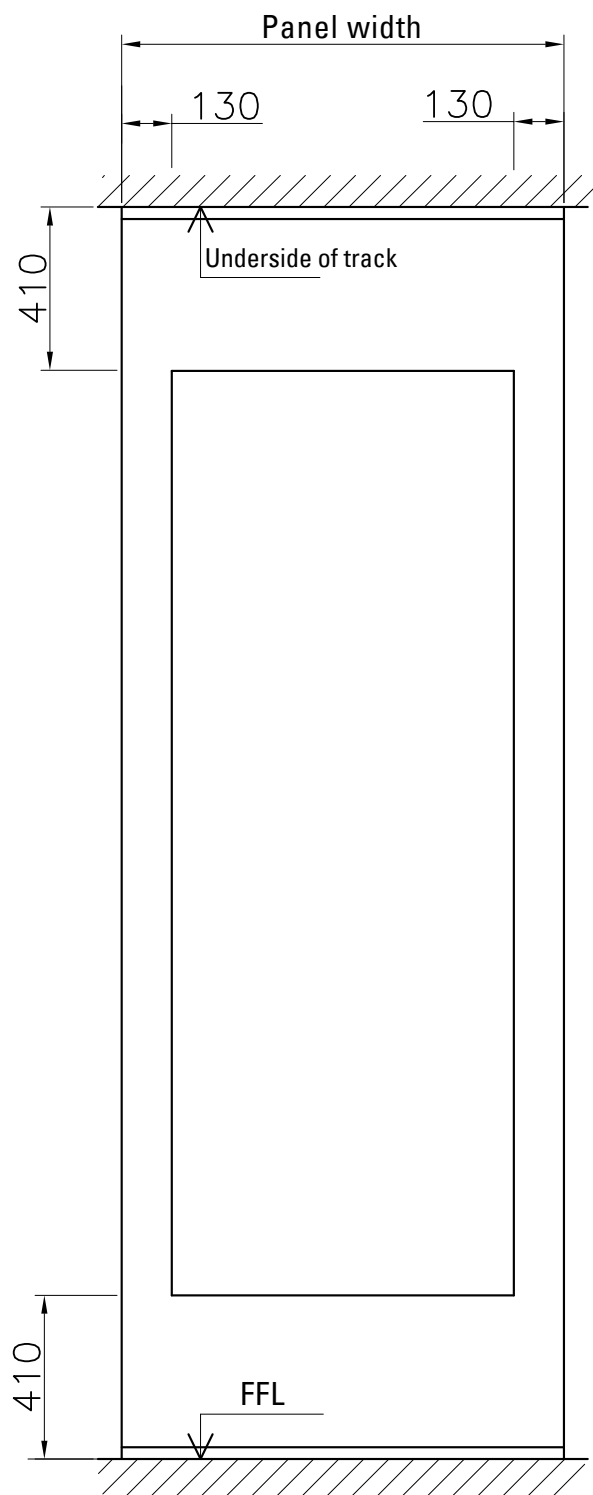
1. The pass door panels have two standard widths.
2. Other door dimensions available on request.

Recessed door handles



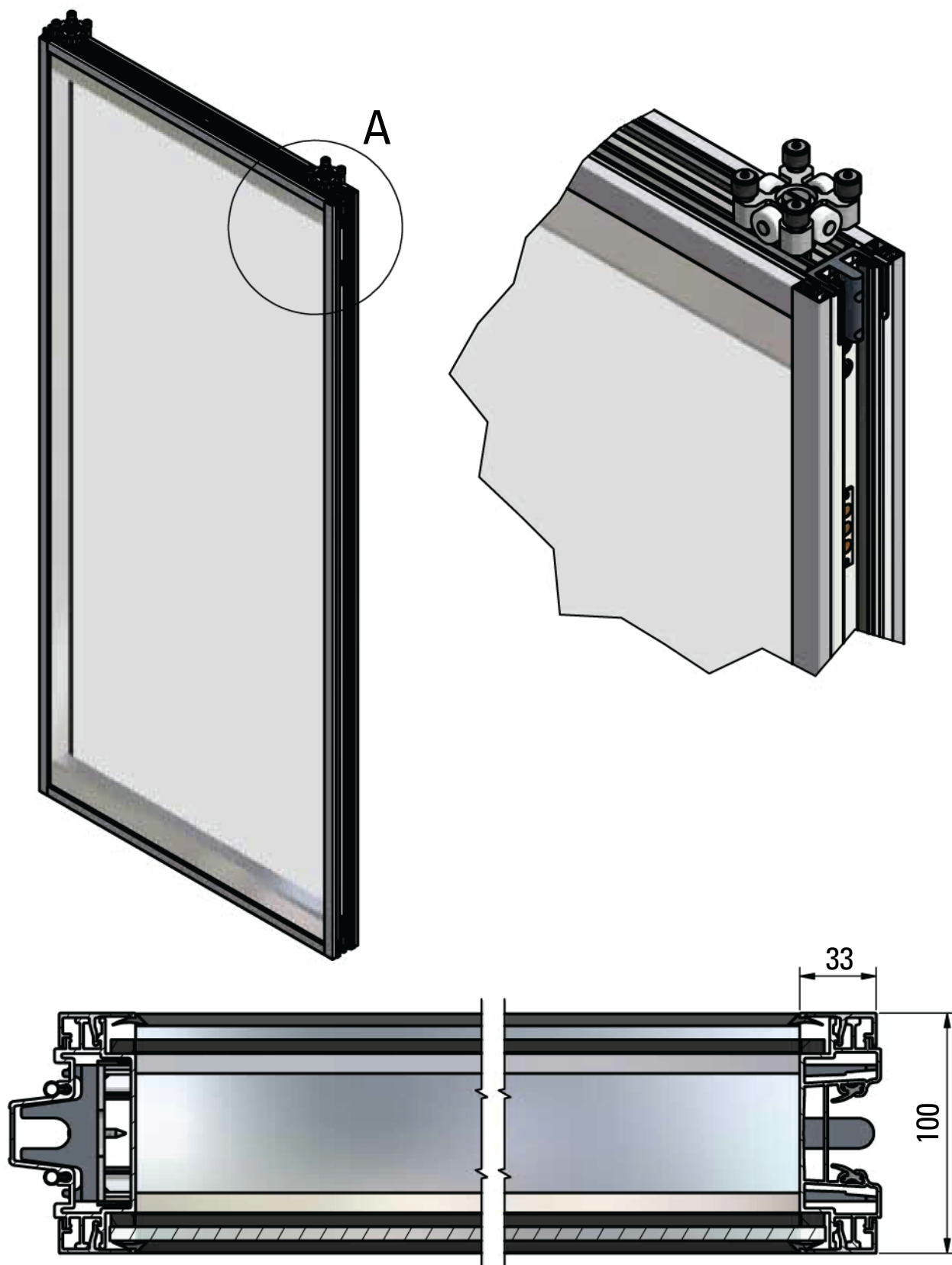
■ Standard recessed door handle

Maximum dimensions of glazed sections





100 G glass panel



Transparency and sound insulation combined

■ **Transparent**

■ **Sound-insulated**



■ **Private**

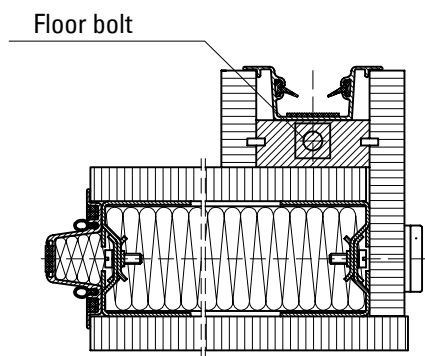
■ **Smoke
check function**

Lismarca fully glazed panels

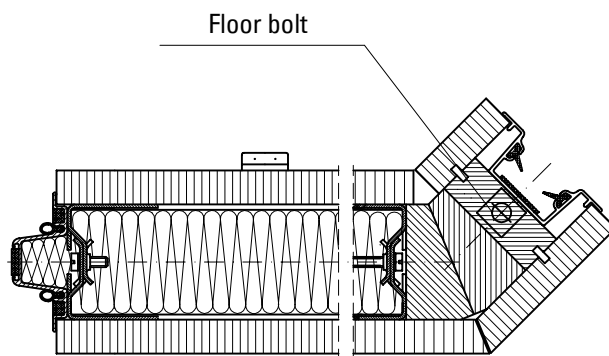
- Sound insulation up to $R_{w,P}$ 54dB
- With electrically operated internal blinds top down or bottom up (optional)
- Smoke check function
- Profiles colour-anodised or RAL powder-coated

Special panels

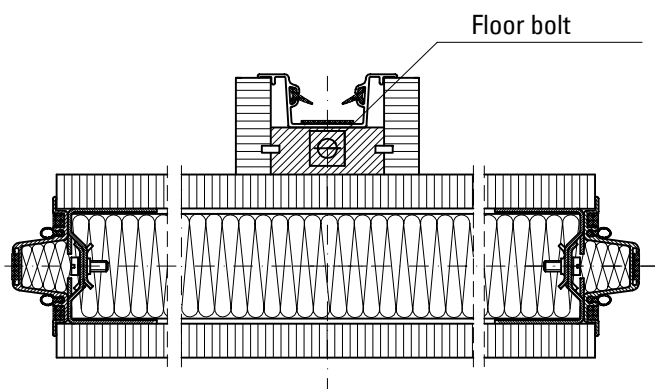
1 Corner panel, e.g. 90°



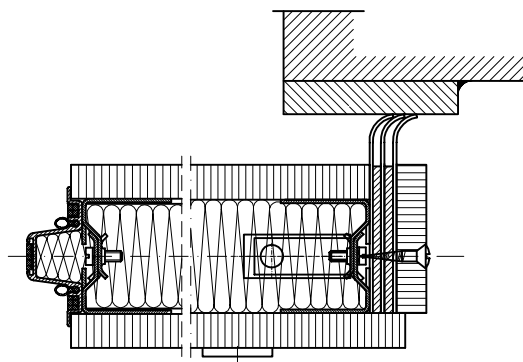
2 Corner panel, e.g. 135°



3 T-post panel

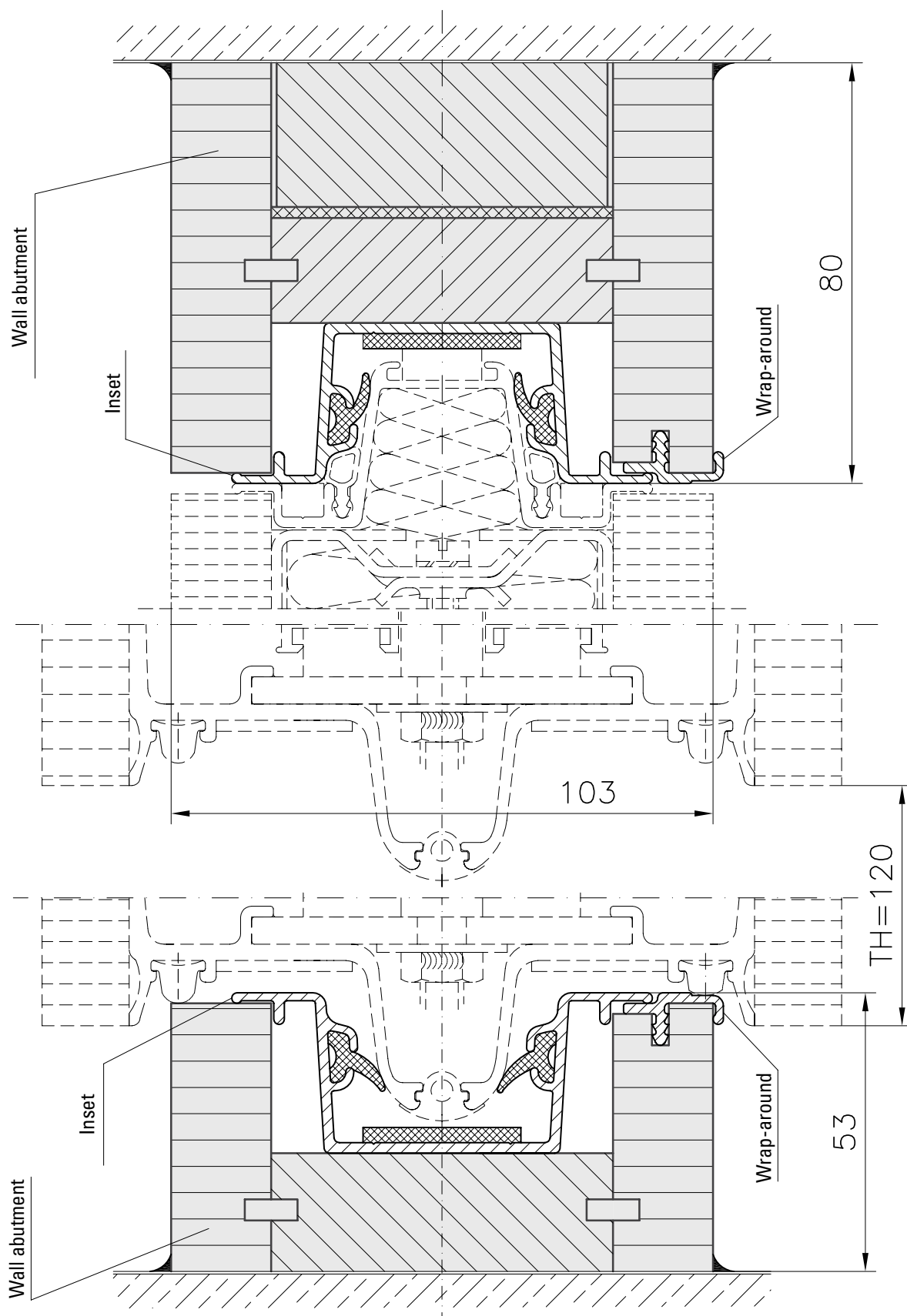


4 Lateral lip-seal panel

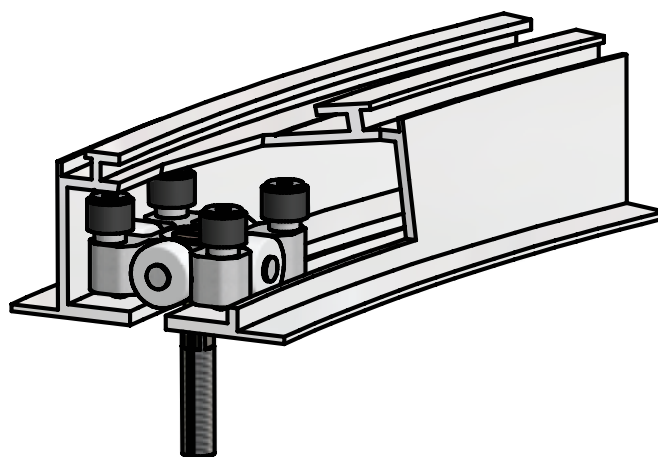
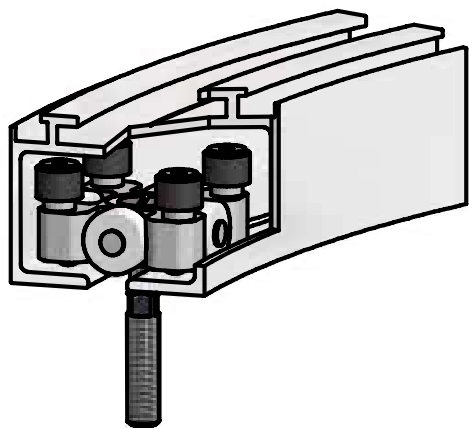


■ We have the solution to suit your planning requirements.

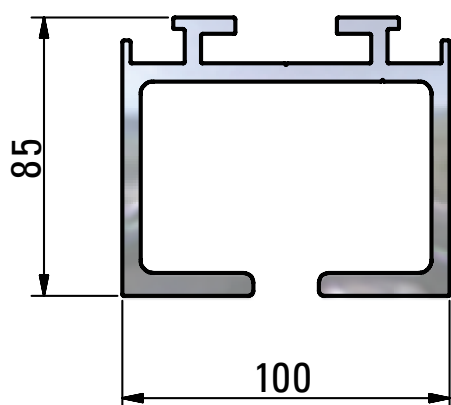
Wall abutments



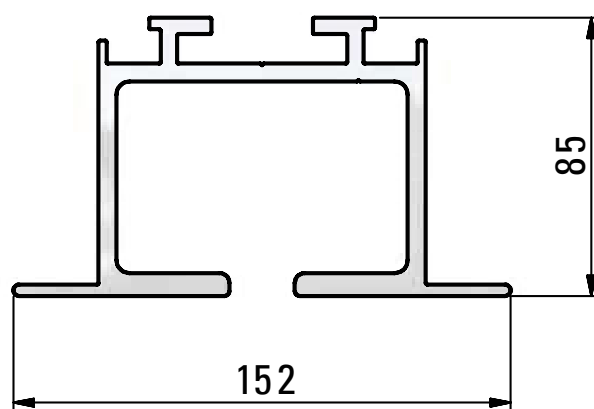
Aluminium tracks



■ Without support angle



■ With support angle



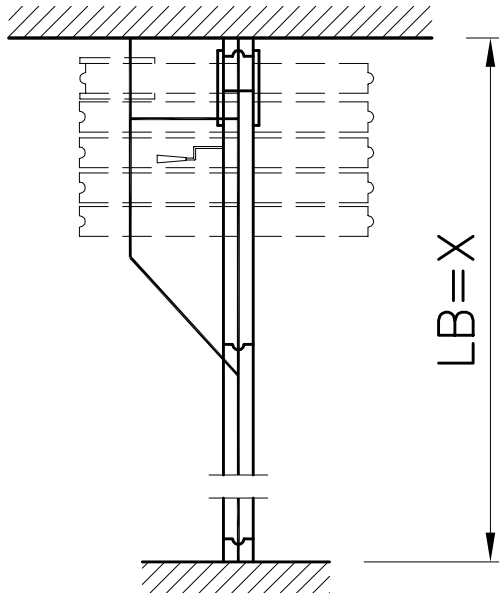
- **Aluminium tracks** (5-1-63.00 / 5-1-65.00) with carriers (5-2-70.00)
- Easy to install and maintain
- Lismarca track systems are fabricated as customised solutions for your particular building project



Parking configurations

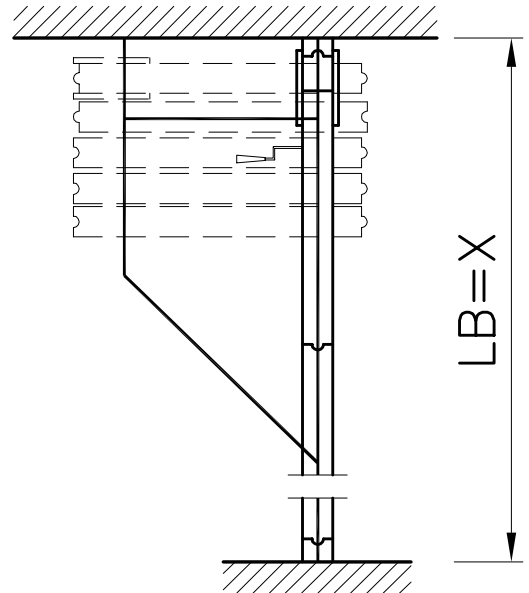
1 Easy-stack system

Panels near-central and transverse to main axis



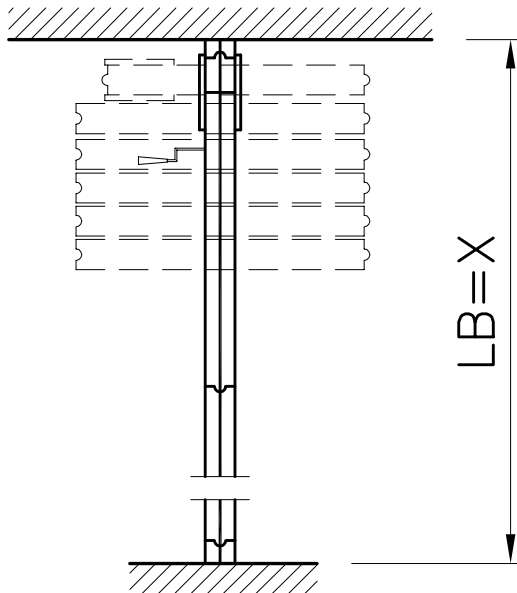
2 Easy-stack system

Panels off-centre and transverse to main axis



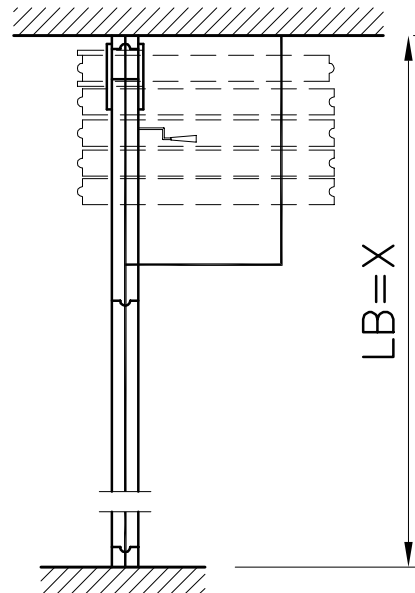
3 Single-point suspension

Without auxiliary tracks in the stacking zone



4 Standard stacking arrangement

Panels to one side and transverse to the main axis

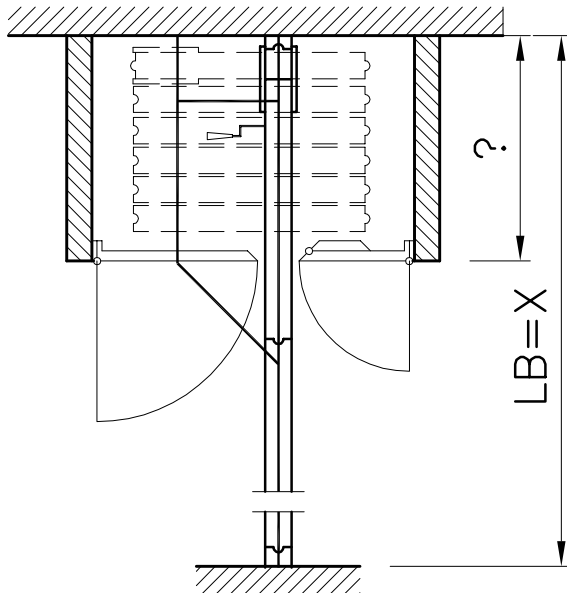


Remarks:

1. Easy-stack and single-point suspension systems in straight track with panel stacking along partition axis possible.
2. Panels may be stacked either to the right or to the left of the partition axis.

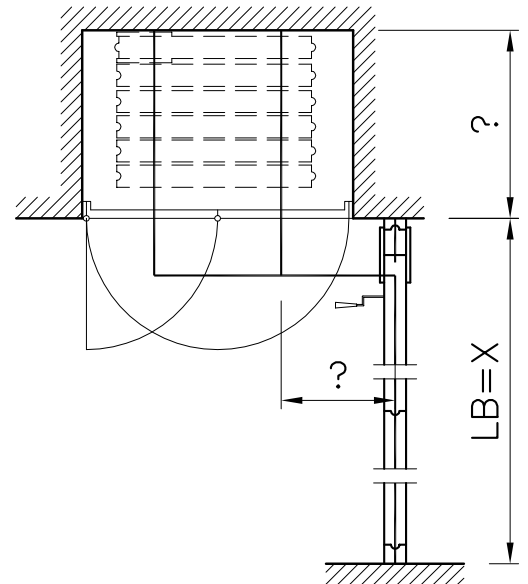
5 Easy-stack system

Panels parked in enclosure by others



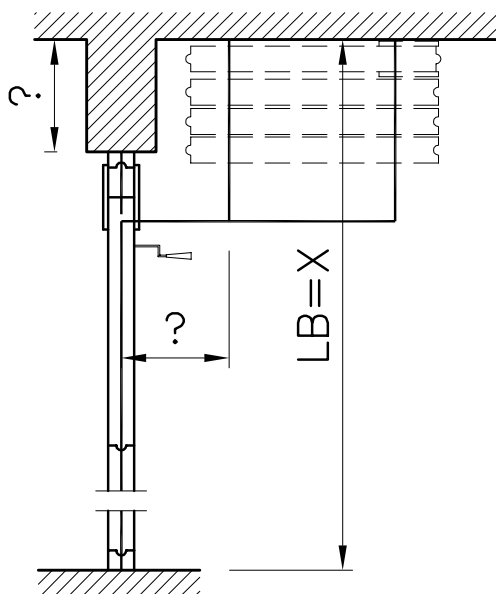
6 Standard stacking arrangement

Panels parked adjacent to the partition axis in a niche by others



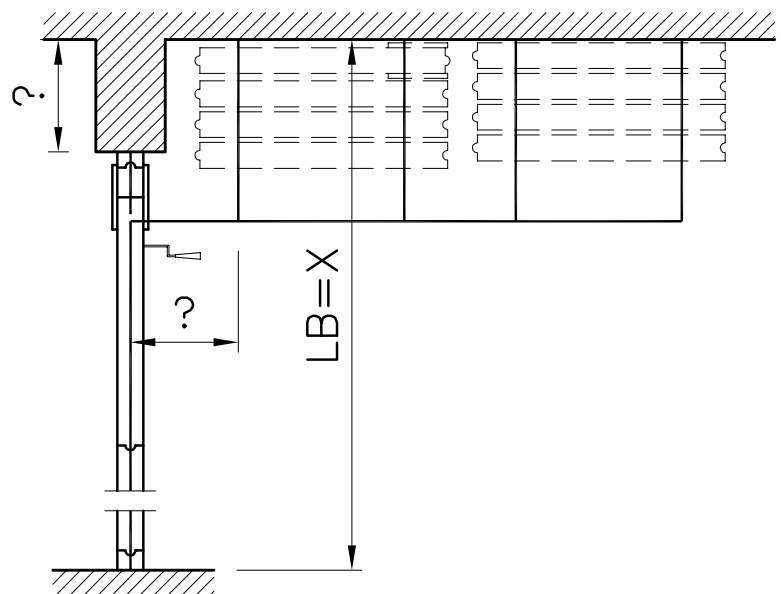
7 Standard stacking arrangement

Panels parked adjacent to the partition axis



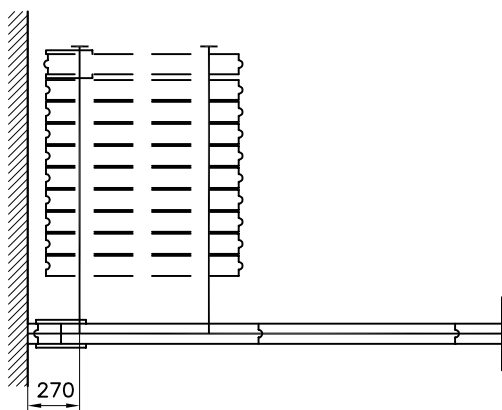
8 Standard stacking arrangement

Panels parked in two stacks adjacent to the partition axis

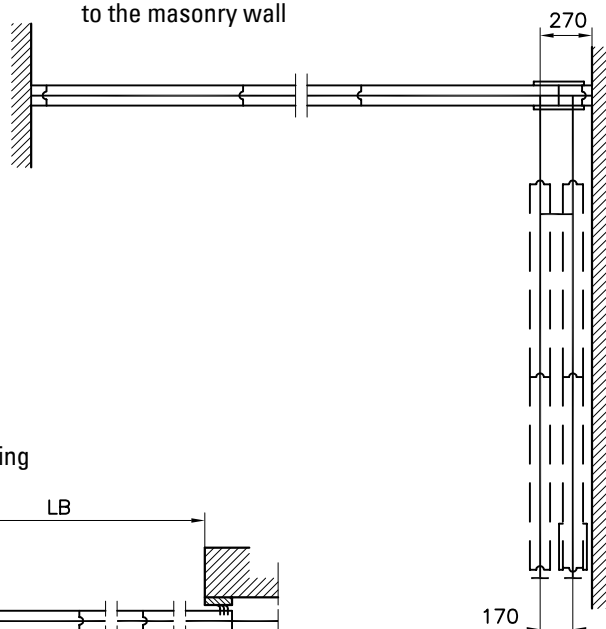


Parking configurations

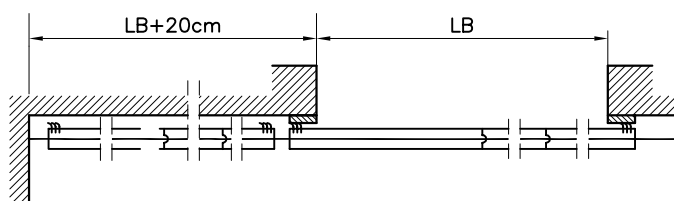
1 Panels longitudinal to the main partition axis



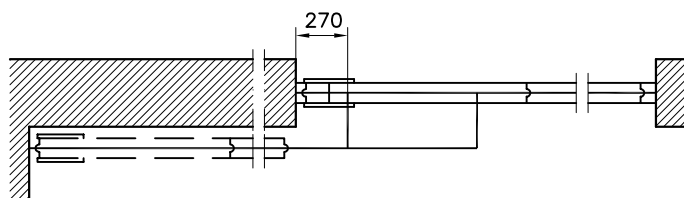
2 Panels in one or several tracks parallel to the masonry wall



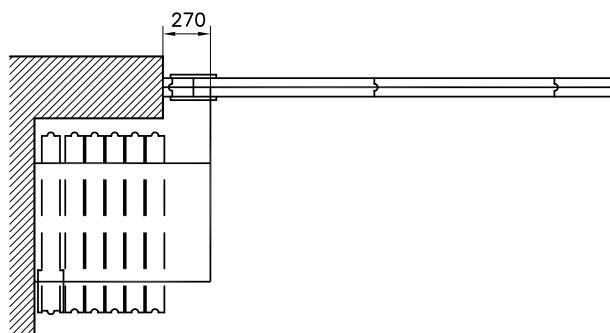
3 Panels next to a masonry opening



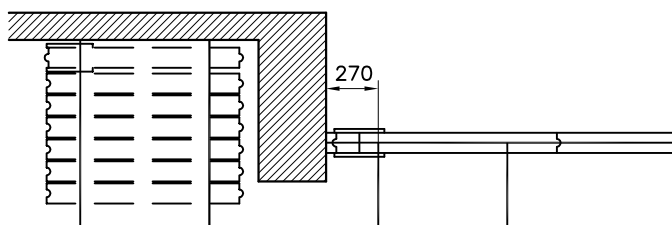
4 Panels longitudinal to the main partition axis



5 Panels transverse to the main partition axis

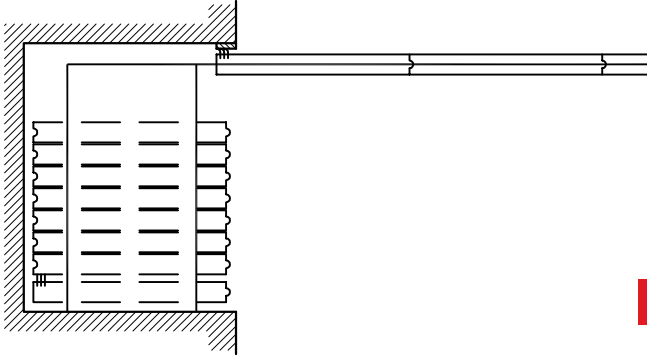


6 Panels longitudinal to the main partition axis behind a pier or pillar

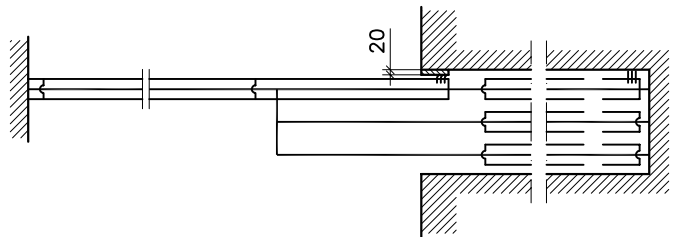


Possibilities for panel stacking behind wall/pier/pillar by others when partition not required

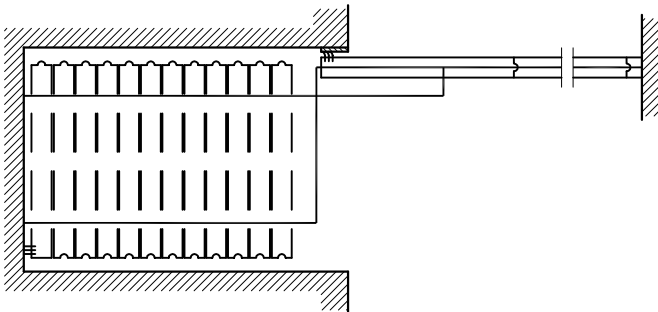
7 Panels longitudinal to the main partition axis with lateral lip-seal panel closure



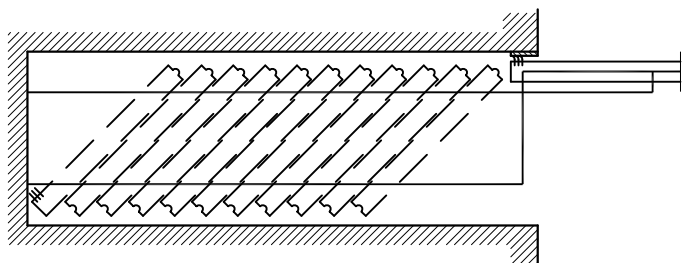
8 Panels longitudinal to the main partition axis with lateral lip-seal panel closure



9 Panels transverse to the main partition axis with lateral lip-seal panel closure



10 Panels diagonal to the main partition axis with lateral lip-seal panel closure



Possibilities for panel stacking in niche by others when partition not required

Certificates – your safety and satisfaction are important to us!




Our products are certified and approved in accordance with the following:

- Quality management system to DIN EN ISO 9001:2008
- GS tested for safety/TÜV Nord
DIN EN 60335-1:2011-11, DIN EN 60335-2-103:2012-05
- Sound insulation test reports / Fraunhofer Institute
DIN EN ISO 10140-2
- Quality management for marine equipment, Module D
Marine Equipment Directive 96/98 EC
- General building regulations approval for movable walls
rated for fire protection (DIN 4102-2)
- Ball impact resistance (DIN 18032-3)
- Reduction of vibration and structure-borne sound in
movable wall tracks
- TÜV certificate
DIN 31000
- EC type-test certificate (Module B)
incl. US coastguard approval
- CE declaration of conformity
- Verification of stability
DIN 4103-1 and DIN 1055-3
- FSC and PEFC certificates for
wood-based claddings
- EMC test certificate for semi-automatic models (DIN 61 000-3-3)

Our range



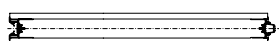
sistemas de sombreamento | mobiliário para hotelaria
sociedade de representações, lda.

Panel type	Panel height Min. & Max. (mm)	Panel width Min. & Max. (mm)	Sound insulation Rw (dB) DIN EN ISO 10140-2	Smoke check DIN 18095	Fire check (F30 / B30) Max. panel height 4000 mm	GS certified 	Operation*
100 M							
Standard panel (NE)	2100 - 12000	600 - 1240	Rw 40 to 60 dB	Yes	Yes	Yes	M/SA/FA
Telescopic panel (TE)	2100 - 12000	600 - 1240	Rw 40 to 60 dB	Yes	Yes	Yes	M/SA/FA
Pass door panel (SE1)	2100 - 12000	1050 - 1200	Rw 40 to 52 dB	Yes	Yes (B30)	Yes	M/SA/FA
Pass door panel double-leaf (SE2)	2100 - 12000	1050 - 1222	Rw 40 to 52 dB	Yes	Yes (B30)	Yes	M/SA/FA
Full-height door (DT)	2100 - 2700	650 - 1000	Rw 40 to 52 dB	Yes	Yes (B30)	Yes	/
Door abutment panel (TAE)	2100 - 12000	600 - 1240	Rw 40 to 60 dB	Yes	Yes (B30)	Yes	M/SA/FA
Corner panel (EE)	2100 - 12000	600 - 1240	Rw 40 to 60 dB	Yes	Yes	Yes	M/SA/FA
Dual-end adapter panel (DGE)	2100 - 12000	600 - 1240	Rw 40 to 60 dB	Yes	Yes	Yes	M/SA/FA
100 G (glass)							
Plain panel (100G-NE)	1300 - 4100	750 - 1240	Rw 43 to 54 dB	Yes	-	Yes	SA + FA
Telescopic panel (100G-TE)	1300 - 4100	750 - 1240	-	Yes	-	Yes	SA + FA
Pass door panel (100M-SE)	1300 - 4100	1050 - 1200	Rw 40 to 52 dB	Yes	-	Yes	SA + FA
Full height door (100M-DT)	2100 - 2700	650 - 1000	Rw 40 to 52 dB	Yes	-	Yes	/
Door abutment panel (100G-TAE)	1300 - 4100	750 - 1240	Rw 43 to 54 dB	Yes	-	Yes	SA + FA
Dual-end adapter panel (100G-DGE)	1300 - 4100	750 - 1240	Rw 43 to 54 dB	Yes	-	Yes	SA + FA
Corner panel (100G-EE)	1300 - 4100	750 - 1240	Rw 43 to 54 dB	Yes	-	Yes	SA + FA

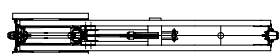
* = Operating mode
M = manual
SA = semi-automatic
FA = fully automatic

100 M

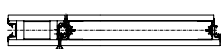
Plain panel (NE)



Telescopic panel (TE)



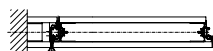
Pass door panel (SE1)



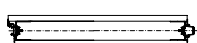
Pass door panel, double-leaf (SE2)



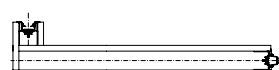
Full-height door (DT)



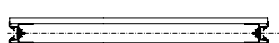
Door abutment panel (TAE)



Corner panel (EE)

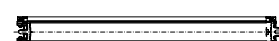


Dual-end adapter panel (DGE)

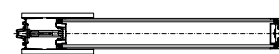


100 G

Plain panel (NE)



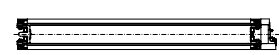
Telescopic panel (TE)



Corner panel (EE)



Door abutment panel (TAE)



Dual-end adapter panel
(100G-DGE)



Portefólio

Obras realizadas

- **Hotel Meliã Madeira Mare** (Funchal)
- **Ginásio Platinum** (Centro Comercial Anadia Shopping, Funchal)
- **Salão de Formação, Jorge Sá, S.a** (Funchal)
- **Salão de Formação, Mata, S.a - Espaço Decor** (Funchal)
- **Hotel Quinta das Vistas Palace Gardens** (Funchal)
- **Hotel Bahia Palace** (Vila Franca do Campo, São Miguel)
- **Casa de Saúde Câmara Pestana** (Funchal)
- **Casa de Saúde São João de Deus** (Funchal)

■ Hotel Meliã Madeira Mare (Funchal)



■ Ginásio Platinum (Centro Comercial Anadia Shopping, Funchal)



Rua Mestre Sidónio 9A, 9020 - 365 Funchal,
Madeira, PORTUGAL (junto ao hiper Continente / Viveiros)

Telefone: 291 741 884 | Telemóvel: 965 010 699

E-mail: info@lismarca.pt

WWW.LISMARCA.PT



sistemas de sombreamento | mobiliário para hotelaria
sociedade de representações, lda.

**We are ready to
support you!**