



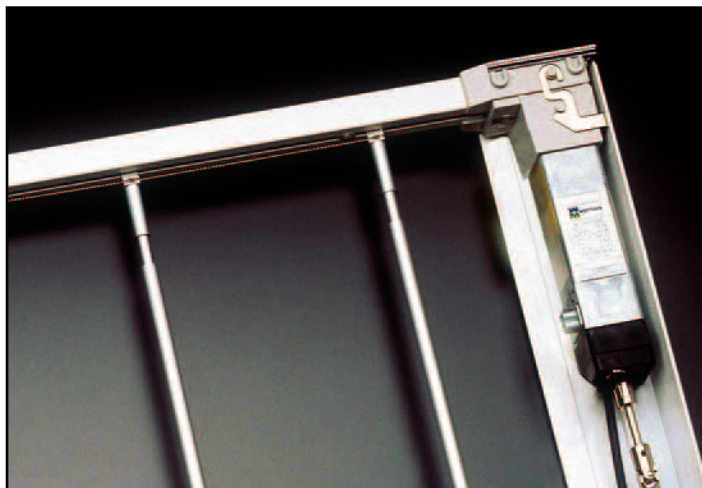
7.1.10

GARDEN 531

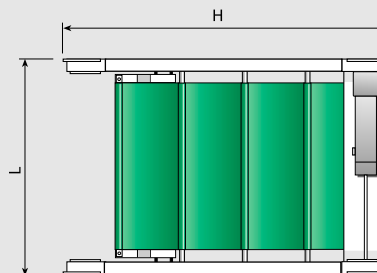


Lismarca





PORTATA TENDE - CURTAIN WEIGHT - PESO CORTINAS



max 18 kg 0°

max 3,5 kg 90°

max 8 kg 15°

max 2,5 kg 90° R

max 4,5 kg 45°

max 10 kg 0° R

max 5,5 kg

UTILIZZI - USE - USO

SISTEMA PER TENDE A LUCERNARIO MEDIO GRANDI
CON AZIONAMENTO A MOTORE

- Tende filtranti ed oscuranti 250 g/m² max 250x1400 cm
- Scorrimento orizzontale, verticale o inclinato
- Curvabile ad ampio raggio (minimo 50 cm)
- Il sistema permette l'installazione in parallelo per grandi coperture
- Motore 133W-220V (su richiesta 133W-110V)
- Installazione con chiavetta girevole a scomparsa

MOTORISED MEDIUM /LARGE SKYLIGHT CURTAIN SYSTEM

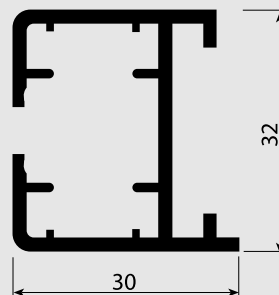
- 250 g/m² max. 250x1400 cm filtering and dimming curtains
- Horizontal, vertical or sloping sliding
- Bendable to a wide radius (50 cm minimum)
- The system allows side-by-side installation for large roof areas
- 220V-133W motor (110V-133W on request)
- Installation using inset rotating key

SISTEMA PARA CORTINAS DE CLARABOYA MEDIO GRANDES
CON ACCION AMIENT O MEDIANTE MOTOR

- Cortinas filtrantes y oscurecientes 250 g/m² máx. 250 x 1400 cm
- Deslizamiento horizontal, vertical o inclinado
- Curvable en radio amplio (mínimo 50 cm)
- Este sistema permite la instalación en paralelo para grandes coberturas
- Motor 133 W-220 V (bajo pedido 133W -110V)
- Montaje mediante chaveta giratoria ocultable

CARATTERISTICHE - DESCRIPTION CARACTERISTIC AS

1:1



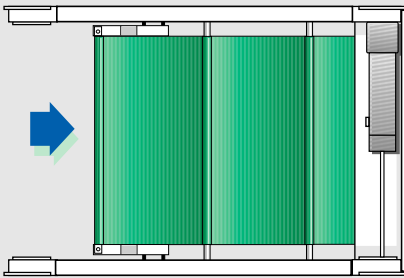
- Profilo in lega d'alluminio estrusa 6060T6 UNI 8278
- Larghezza 30 mm; Altezza 32 mm; Aste telescopiche ø 15x2 mm
- Profilo di copertura in lega d'alluminio UNI 6060 70x93 mm
- Finitura superficiale: verniciatura poliestere bianco RAL 9016 verniciatura poliestere nero RAL 9005 - anodizzato argento
- Nastro di trascinamento in poliestere orientato ad alta resistenza
- Accessori in acetilica autolubrificante
- Motore 133W/220V con finecorsa elettro-meccanico incorporato
- Velocità di scorrimento 5,3 cm/s

- 6060T6 UNI 8278 extruded aluminium alloy track
- Width 30 mm; Height 32 mm; Telescopic rods 15x2 mm ø
- 90x73 mm UNI 6060 aluminium alloy roof area track
- Surface finish:RAL 9016 white polyester paint RAL 9005 black polyester paint - silver anodised
- High resistance oriented polyester drive belt
- Self-lubricating acetylic accessories
- 220V/133W motor with incorporated electromechanical limit stop system
- Sliding speed: 5.3 cm/s

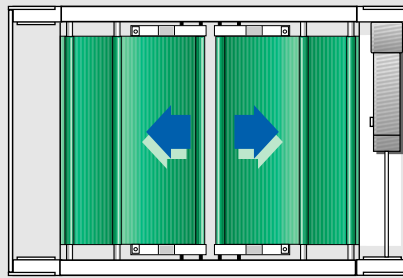
- Perfil en aleación de aluminio extruida 6060T6 UNI 8278
- Anchura 30 mm; Altura 32 mm; Astas telescópicas ø 15x2 mm
- Perfil de cobertura en aleación de aluminio UNI 6060 70x93 mm
- Acabado de las superficies: pintura poliéster blanca RAL 9016 pintura poliéster negra RAL 9005 - anodizado plata
- Cinta de arrastre en poliéster orientado de alta resistencia
- Accesorios de acetálico autolubrificante
- Motor 133W/220V con final de carrera electromecánico incorporado
- Velocidad de deslizamiento 5,3 cm/seg



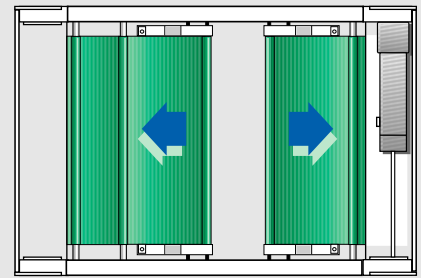
APERTURA - OPENING - APERTURA



- Laterale
- Lateral
- Lateral

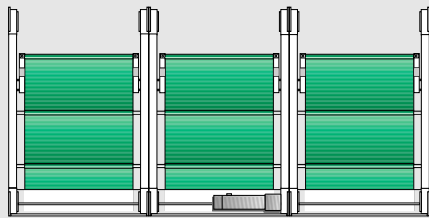


- Centrale
- Central
- Central



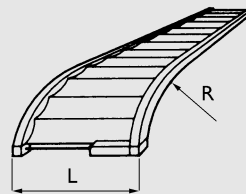
- Asimmetrica
- Asymmetric
- Asimétrica

INSTALLAZIONE IN PARALLELO - SIDE BY SIDE INSTALLATION - INSTALACIÓN EN PARALELO

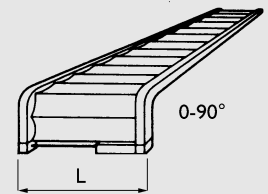


5291

CURVE - BENDING - CURVAS

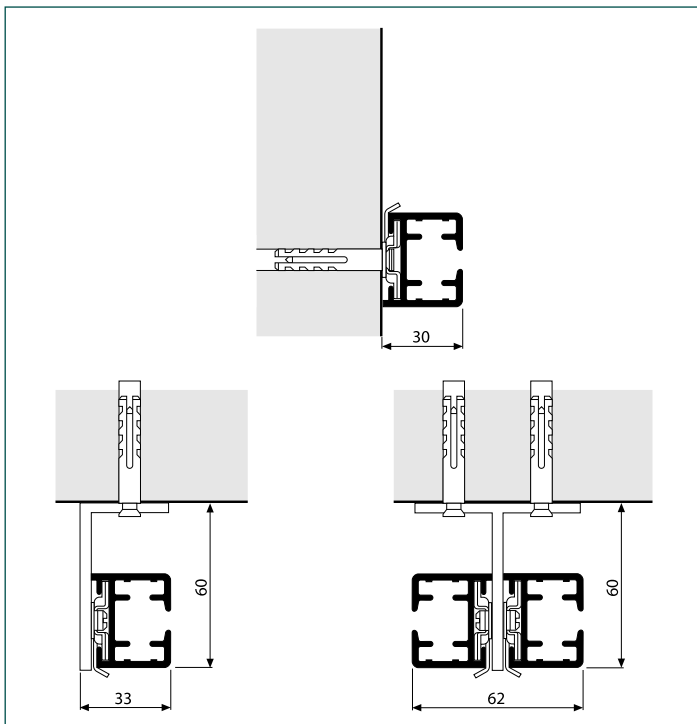


- Raggio minimo 50 cm
- Minimum radius 50 cm
- Radio minimo 50 cm



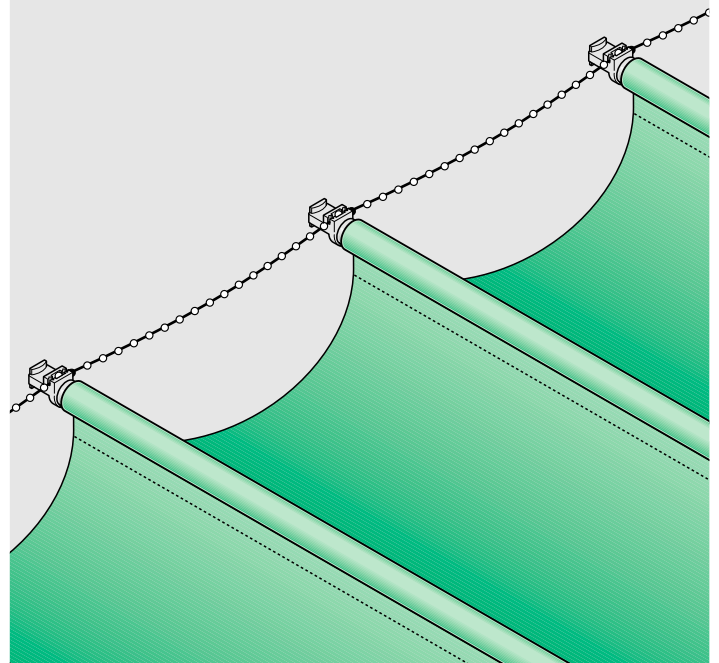
- Raggio minimo 35 cm
- Minimum radius 35 cm
- Radio minimo 35 cm

INSTALLAZIONE - INSTALLATION - INSTALACIÓN

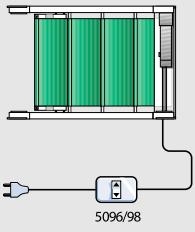
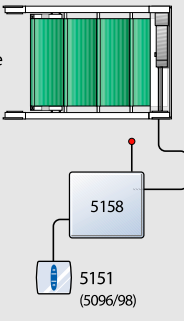
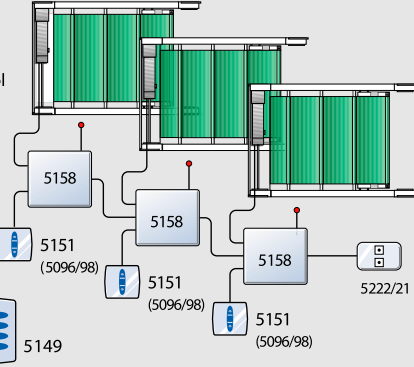
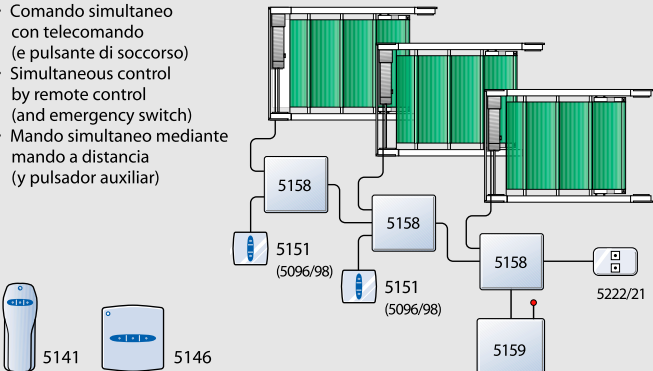
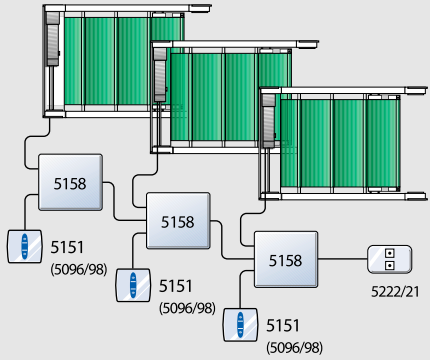


DRAPPEGGIO - DRAPING - ONDULACIÓN TOLDO

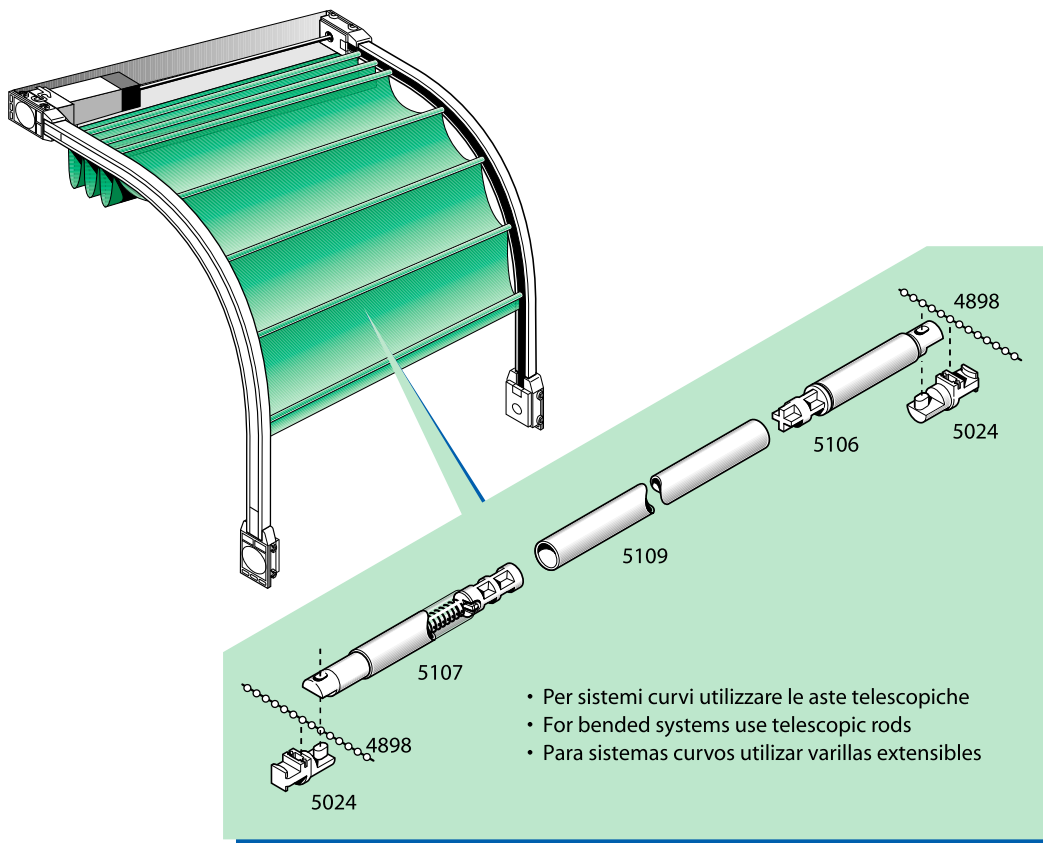
- Determinabile con catenella Art. 4898
- Adjustable with bead chain Art. 4898
- Regulable a voluntad mediante la cadena ref. 4898



COMANDI A DISTANZA - REMOTE CONTROLS - MANDOS A DISTANCIA

 <ul style="list-style-type: none"> • comando singolo con pulsante • single control by switch • mando individual y pulsador 	<ul style="list-style-type: none"> • Comando singolo con telecomando (e pulsante di soccorso) • Single control by remote control (and emergency switch) • Mando individual mediante mando a distanza (y pulsador auxiliar) 	<ul style="list-style-type: none"> • Comando singolo e simultaneo con telecomando (e pulsante di soccorso) • Single and simultaneous control by remote control (and emergency switch) • Mando individual y simultaneo mediante mando a distancia (y pulsador auxiliar) 
<ul style="list-style-type: none"> • Comando simultaneo con telecomando (e pulsante di soccorso) • Simultaneous control by remote control (and emergency switch) • Mando simultaneo mediante mando a distancia (y pulsador auxiliar) 		<ul style="list-style-type: none"> • Comando simultaneo e singolo con pulsante • Single and simultaneous control by switch • Mando individual y simultaneo mediante pulsador 

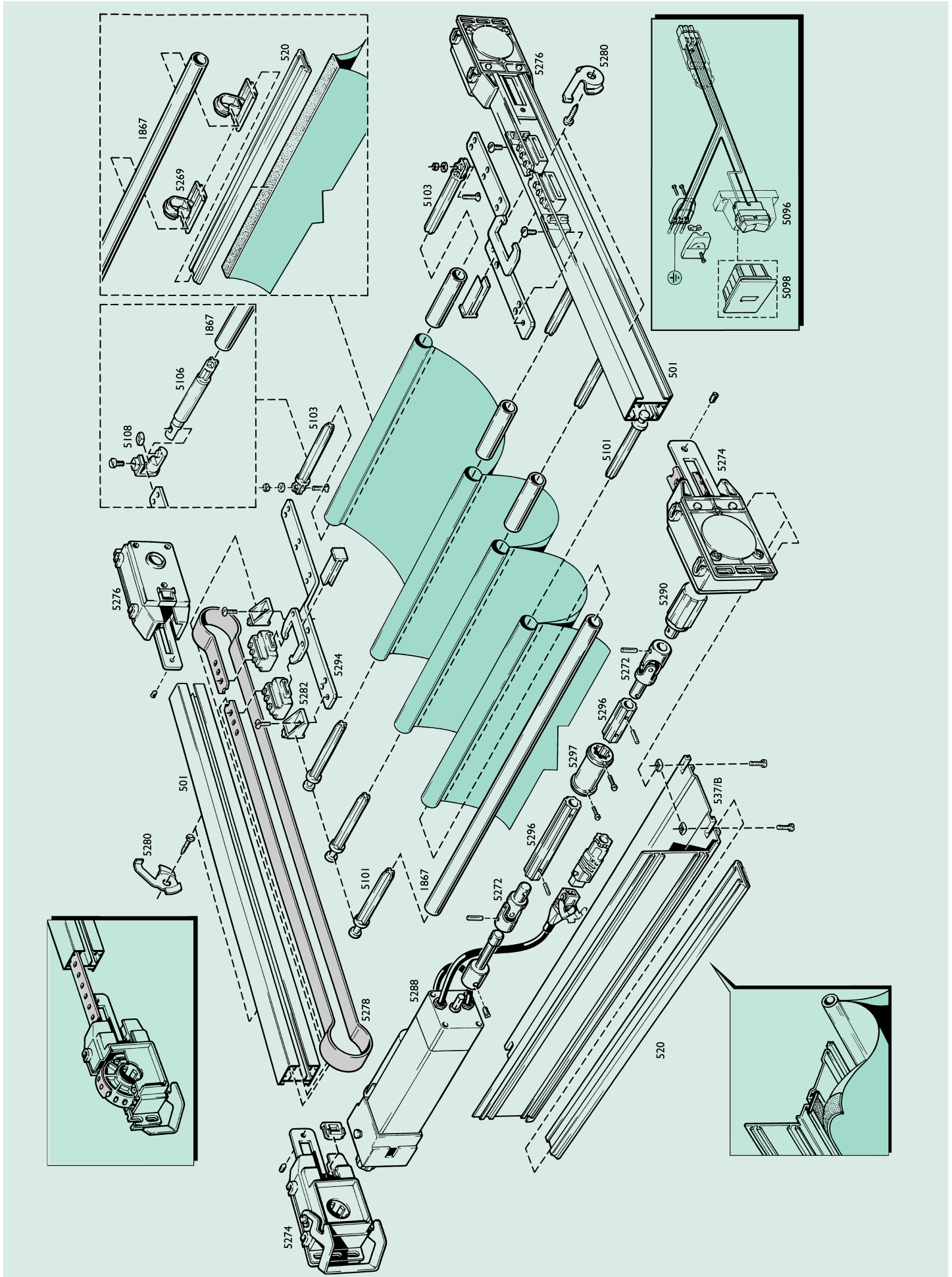
SISTEMI CURVATI - BENDED SYSTEMS - SISTEMAS CURVOS



The diagram shows a curved roller blind system. A detailed view of the telescopic rod assembly includes the following components:

- 5106: Telescopic rod section
- 5109: Telescopic rod section
- 5107: Telescopic rod section with spring
- 4898: Spring component
- 5024: End cap component

- Per sistemi curvi utilizzare le aste telescopiche
- For bended systems use telescopic rods
- Para sistemas curvos utilizar varillas extensibles





Lismarca

Rua Mestre Sidónio 9A, 9020 - 365 Funchal, Madeira, PORTUGAL (junto ao hiper Continente / Viveiros)
Telefone: 291 741 884 | Telemóvel: 96 50 10 699 | E-mail: info@lismarca.pt

WWW.LISMARCA.PT